



ST. JOHN BOSCO SCHOOL

5630 West Commerce St.
San Antonio, Texas 78237

phone 432 - 8011 web www.stjohnbosco-satx.org fax 1-866-214-8083

The mission of St. John Bosco School is to educate youth academically and spiritually in the Catholic, Salesian tradition of Reason, Religion and Loving Kindness.
St. John Bosco School is a school where children experience . . .

. . . *Loving to learn*  *Learning to Love!*

August 2011

Su	M	Tu	We	T	Fr	Sa
	1	2	3	4	5	6
7	8	9	10	11	12	13
14	15	16	17	18	19	20
21	22	23	24	25	26	27
28	29	30	31			

September 2011

Sun	M	Tu	W	T	Fr	Sa
				1	2	3
4	5	6	7	8	9	10
11	12	13	14	15	16	17
18	19	20	21	22	23	24
25	26	27	28	29	30	

October 2011

Su	M	Tu	W	Th	Fri	Sa
						1
2	3	4	5	6	7	8
9	10	11	12	13	14	15
16	17	18	19	20	21	22
23	24	25	26	27	28	29
30	31					

first and last day of school

student holidays

half days

Teacher professional days no school

Summer Prep Days

November 2011

Su	M	T	W	Th	Fri	Sa
		1	2	3	4	5
6	7	8	9	10	11	12
13	14	15	16	17	18	19
20	21	22	23	24	25	26
27	28	29	30			

December 2011

Su	M	Tu	W	Thu	Fri	Sa
				1	2	3
4	5	6	7	8	9	10
11	12	13	14	15	16	17
18	19	20	21	22	23	24
25	26	27	28	29	30	31

January 2012

Su	Mo	Tu	W	Th	Fr	Sa
1	2	3	4	5	6	7
8	9	10	11	12	13	14
15	16	17	18	19	20	21
22	23	24	25	26	27	28
29	30	31				

February 2012

M	Tu	W	Th	Fri	Sa
		1	2	3	4
5	6	7	8	9	10
12	13	14	15	16	17
19	20	21	22	23	24
26	27	28	29		

March 2012

Su	M	Tu	W	Th	Fri	Sa
				1	2	3
4	5	6	7	8	9	10
11	12	13	14	15	16	17
18	19	20	21	22	23	24
25	26	27	28	29	30	31

April 2012

Su	M	Tu	W	Th	Fri	Sa
1	2	3	4	5	6	7
8	9	10	11	12	13	14
15	16	17	18	19	20	21
22	23	24	25	26	27	28
29	30					

May 2012

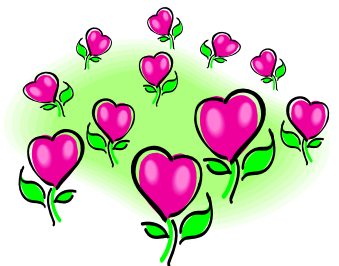
Su	M	Tu	W	Th	Fri	Sa
		1	2	3	4	5
6	7	8	9	10	11	12
13	14	15	16	17	18	19
20	21	22	23	24	25	26
27	28	29	30	31		

June 2012

Su	M	Tu	W	Th	Fri	Sa
					1	2
3	4	5	6	7	8	9
10	11	12	13	14	15	16
17	18	19	20	21	22	23
24	25	26	27	28	29	30

July 2012

Su	M	Tu	W	Th	Fri	Sa
1	2	3	4	5	6	7
8	9	10	11	12	13	14
15	16	17	18	19	20	21
22	23	24	25	26	27	28
29	30	31				



Loving to Learn
Loving God
Loving one another